

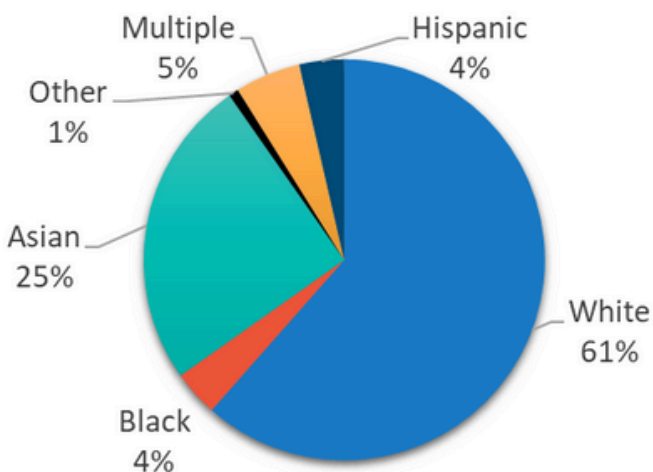


Acton Community Profile 2023

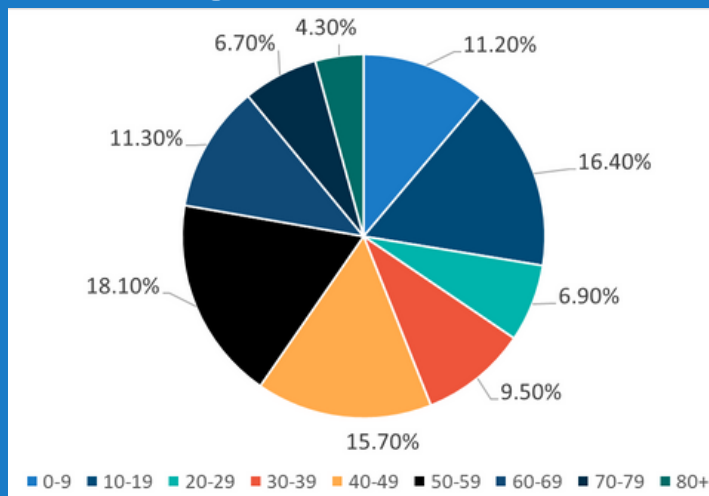
Acton is a suburban community located 25 miles northwest of Boston. The town sits along Massachusetts Route 2, west of Concord, and about ten miles southwest of Lowell. The MBTA Commuter Rail Fitchburg Line train stops at the South Acton station.

Acton has a total of more than 1,650 acres of town-owned conservation lands.

Race/Ethnicity



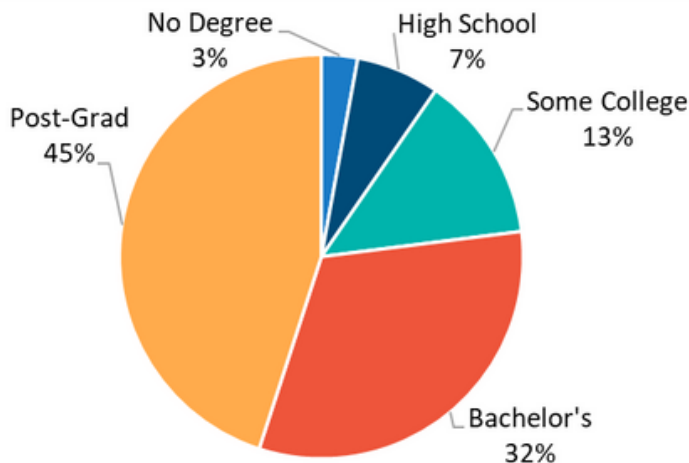
Age Distribution



Household Income



Education

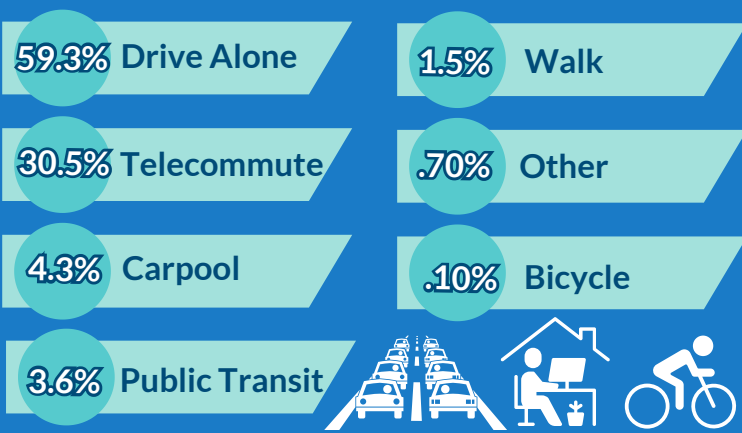


Total Population

24,021

2024 US Census Data

Transportation to Work





Acton Libraries Profile 2023

The Acton Libraries operating budget was \$1,563,897. We are open 64 hours per week. We have 18 FTE's, with 12 holding MLS degrees.

Here are some examples of services we provide that help our community members save money!

Bridging the Digital Divide

- Computers used 6,422 times
- WiFi accessed an average of 5,000 times a month



Library Cardholders 2023



1,280 New Cards

In-Person Visits

165,103



533,472 Items Circulated

Study Room Usage

2,581 Bookings



Museum Passes

1,370 Museum Trips!

TOP 5 MOST VISITED

1. (TIE) Museum of Science + New England Aquarium: 153 Trips
2. Museum of Fine Arts: 136 Trips
3. Discovery Museum: 145 Trips
4. Isabella Stewart Gardner Museum: 92 Trips
5. Boston Children's Museum: 88 Trips

Library Programs

159 Programs

1,148 attended Adult Programs

14 Programs

226 attended Young Adult Programs

509 Programs

4,142 attended Children's Programs

Print Books Borrowed

115,217 Adult Books

6,088 Young Adult Books

185,750 Children's Books

